

ELECTRADROP

LOCINOX®

WWW.LOCINOX.COM

USER GUIDE

- ENGLISH
- NEDERLANDS
- FRANÇAIS
- DEUTSCH



Copyright

Copyright © 2012 Locinox. All rights reserved.

This product incorporates copyright protected technology that is protected by a number of EU patent method claims and other intellectual property rights owned by the Locinox Corporation and other rightholders.

Use of this copyright protected technology must be authorized by the Locinox Corporation. Reverse engineering or disassembly is prohibited. No part of this publication can either be reproduced, communicated, transcribed, stored in a retrieval system or be translated into any language in any form or by any means, whether electronic, mechanical, magnetic, optical, chemical, manual or otherwise, unless explicit written consent has been given by the copyright holder.

Notice

The contents of this publication is subject to change. The company reserves the right to alter the contents of this publication at any time and without notice. The contents of this publication may contain inaccuracies or typographical errors and is supplied for informational use only.

Technical Support

If you require any additional information or assistance during the installation, please contact your dealer, who will be able to provide the latest information. Alternatively, you can visit the Locinox website for more technical information or e-mail us on locinox@locinox.com

ENGLISH

NEDERLANDS

FRANÇAIS

DEUTSCH

- A discarded device can either be returned to your dealer or be sent back to Locinox. This product's recycling fee is € 0,2.



- The WEEE marking on the product indicates that it may not be thrown away together with normal household waste and must be handed over to a designated collection point for the recycling of electrical and electronic rejects.



- As manufacturer of this product, we guarantee that we have taken all the necessary steps in order for this product to comply with the current safety requirements.



Contents

Copyright © 2012 Locinox 03

English

1. Introduction	06
2. Package content	06
3. Characteristics of the Electradrop	07
4. Electrical Specification	08
5. Dimensions	08
6. Mounting	09
7. Electrical Wiring	09
8. FAQ	12

Nederlands

1. Inleiding	13
2. Pakketinhoud	13
3. Kenmerken van de Electradrop	14
4. Elektrische specificaties	15
5. Dimensies	15
6. Montage	16
7. Elektrische aansluiting	19
8. FAQ	19

Français

1. Introduction	20
2. Contenu de l'emballage	20
3. Caractéristiques de l'Electradrop	21
4. Spécifications électrique	22
5. Dimensions	22
6. Montage	23
7. Câblage électrique	27
8. FAQ	27

Deutsch

1. Einleitung	28
2. Paketinhalt	28
3. Besonderheiten des Electradrops	29
4. Elektrische Daten	30
5. Abmessungen	30
6. Montage	31
7. Elektrische Verbindung	34
8. FAQ	34

ENGLISH

NEDERLANDS

FRANÇAIS

DEUTSCH

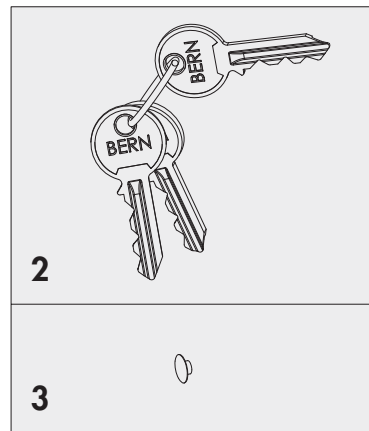
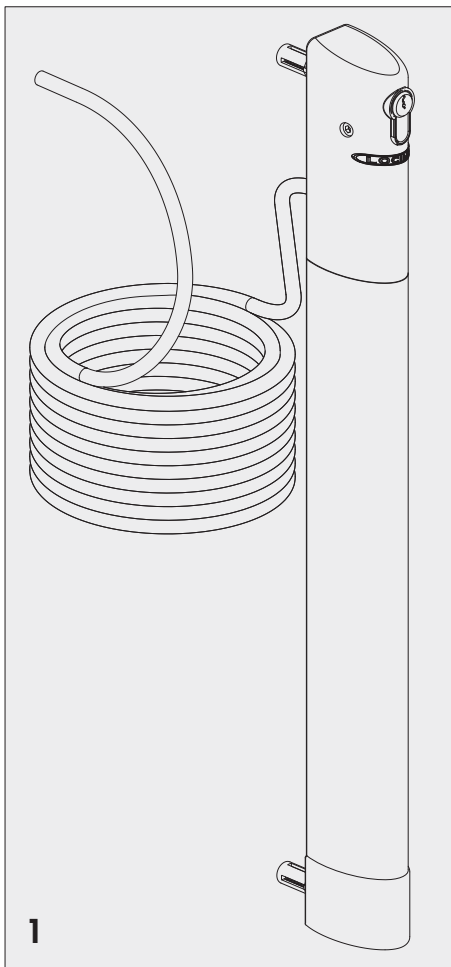
Manual - English

1. Introduction

Thank you for choosing a Locinox electrical dropbolt! Please read the following instructions thoroughly before mounting the Electradrop. Enclosed you will find all relevant user information concerning the Electradrop.

2. Package Contents

Please check if your package contains the following items:



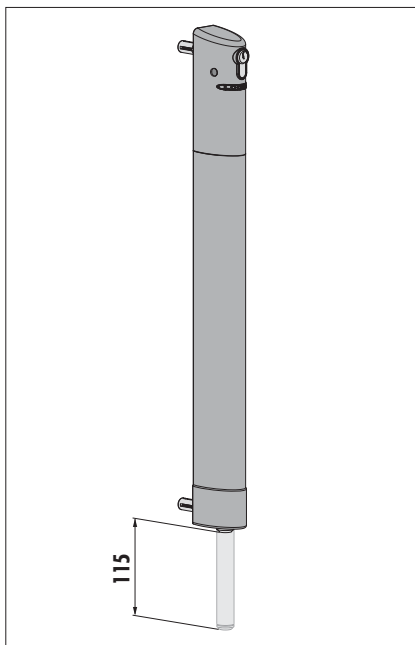
1	Electrical dropbolt (1x) & connecting cable 5 m with 5 x 0,5 mm ²
2	Cylinder keys (3x)
3	Polyamide cover cap (1x) for cylinder bolt protection

Please contact your supplier should any of the above items be damaged or missing.

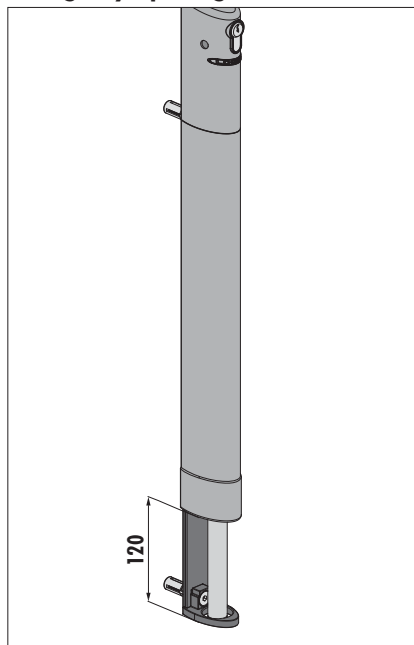
3. Characteristics of the Electradrop

- The Electradrop is an automatic drop bolt specially developed for outside use in combination with automatic swing gates.
- The product has a powder-coated aluminium / stainless steel casing and a stainless steel drop-pin.
- Anti - theft and vandalism proof fixing concept.
- Easy emergency opening in case of power failure by unlocking the cylinder. Afterwards, you can slide up the Electradrop 120mm.
- Cylinder type: europrofile cylinder 27/10, (Locinox cylinder code: **3012G21Z**).
- The Electradrop needs to be connected to the warning light (flashing light) output signal. This output must have a timeframe of minimum 3 seconds before activating the opening sequence. The electradrop needs less than 3 seconds to retract the drop-pin before the gates opens. 2 seconds after the flashing light has been put out, the dropbolt will automatically go down again.
- Throw: 115mm
- Obstacle detection: Once the Electradrop encounters any obstacle in the downward movement, it will automatically stop at this position. The dropbolt develops a downward force of 18kg during his movement.
- Relay output for upper position detection of the bolt (connection position 3-4; 2 black wires of the cable).
- Installation with Locinox groundstop, type OGS.

Throw: 115 mm



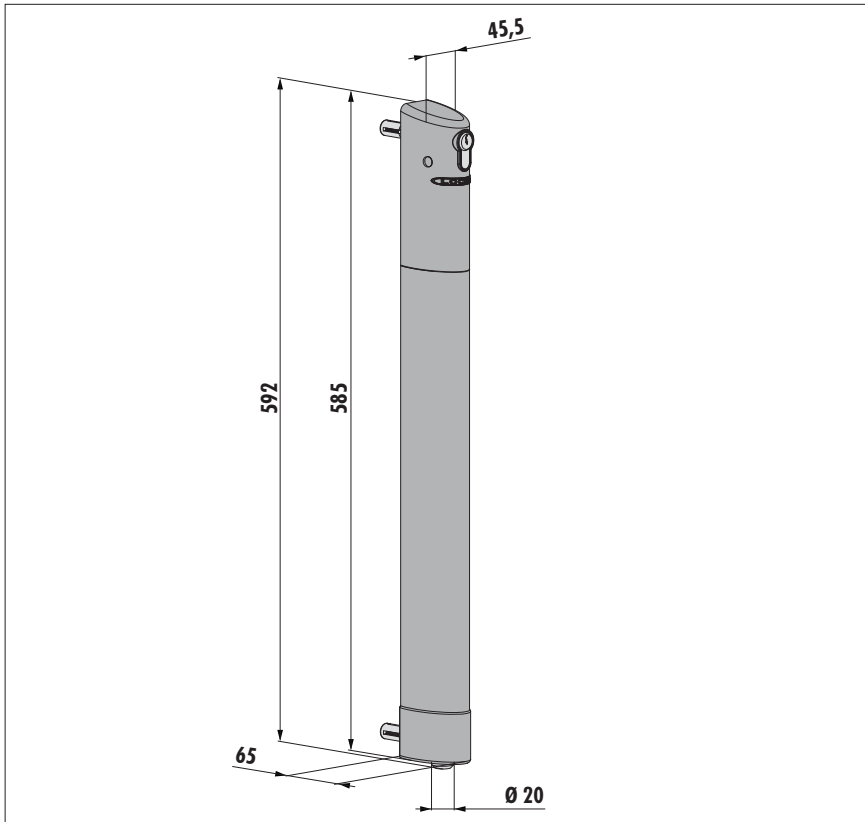
Emergency opening: 120 mm



4. Electrical Specification

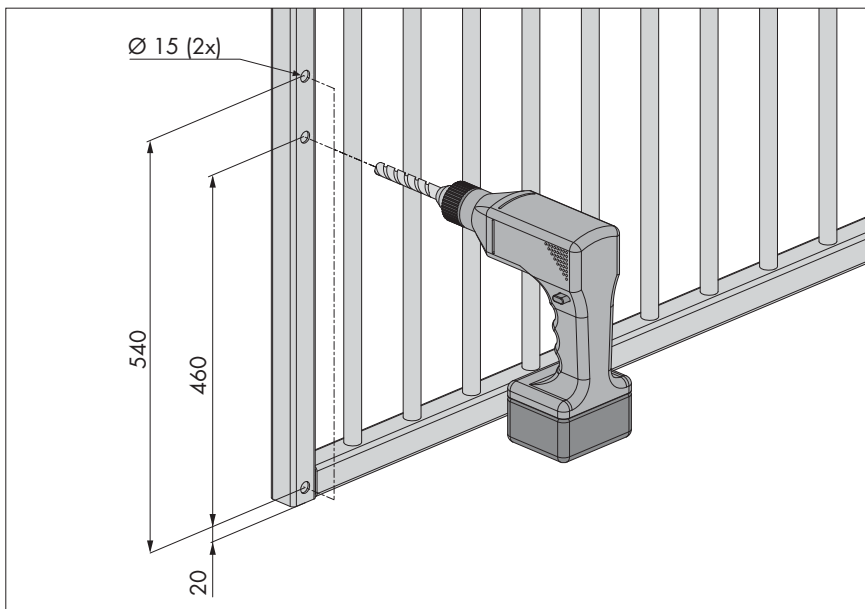
Voltage	24V DC (polarity secured)
Power consumption	11 W
Power consumption at rest	0,2 W
Insulation class	□
Maximum switching voltage of the contact (3-4)	200V (DC or peak AC)
Maximum switching current of the contact (3-4)	1A (DC or peak AC)
Maximum switching power of the contact (3-4)	20W (Any DC combination of V and A should not exceed their individual limits.)

5. Dimensions

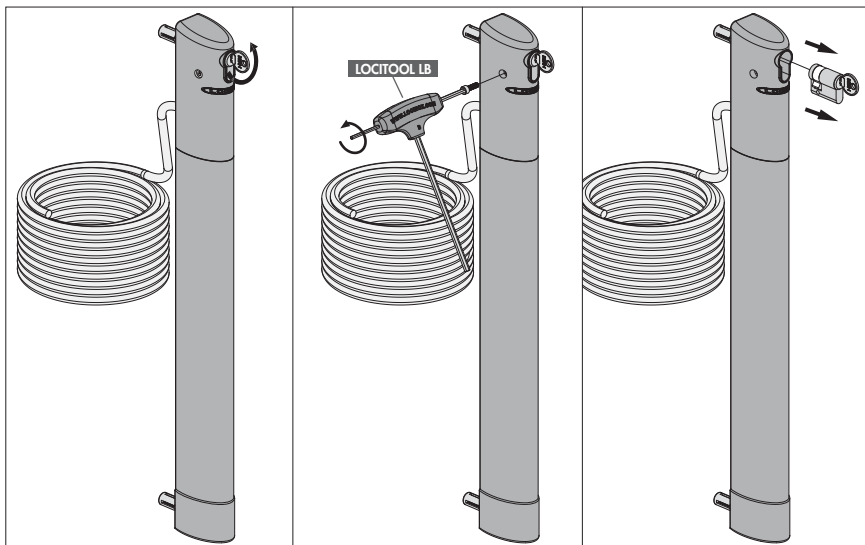


6. Mounting

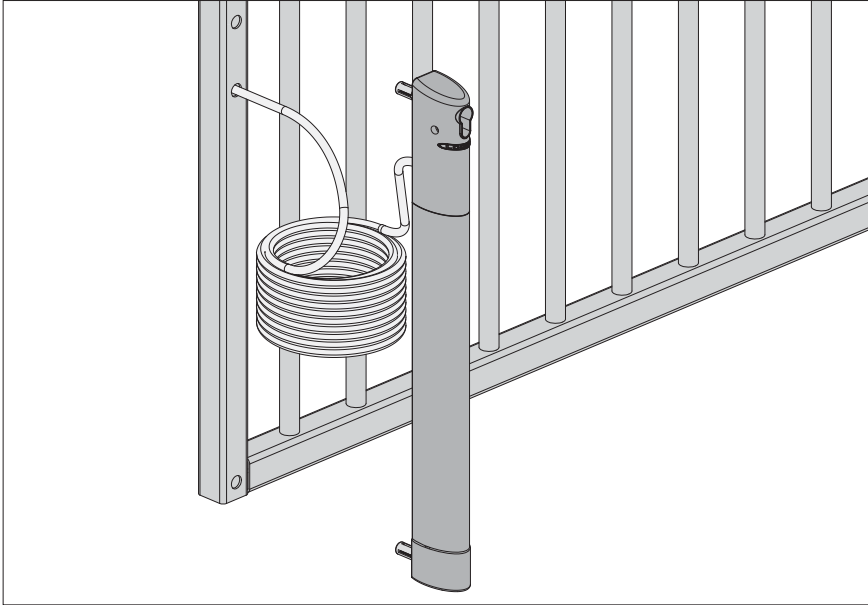
Step 1: Gate preparation



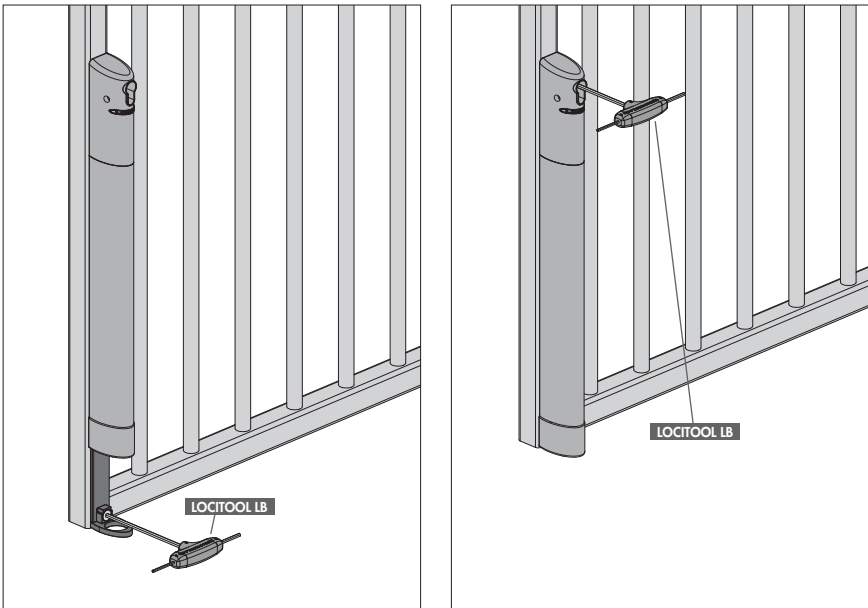
Step 2: Unlock the Electradrop and remove the cylinder



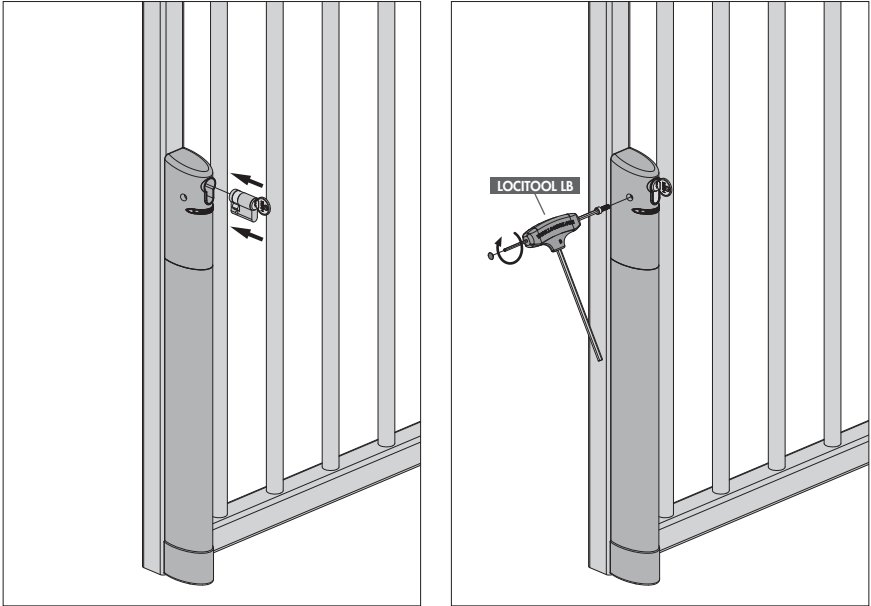
Step 3: Pull the cable through the gate profile



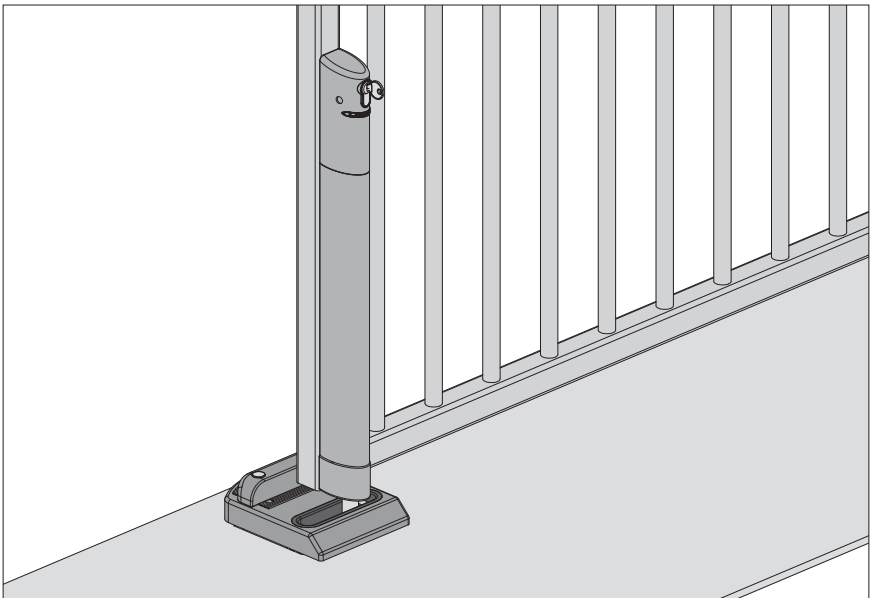
Step 4: Mounting the Electadrop



Step 5: Mount the cylinder



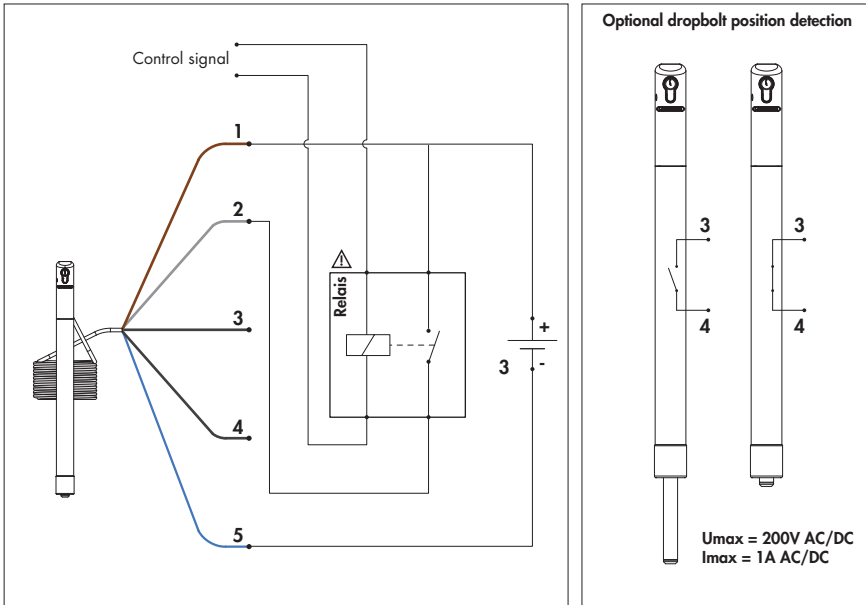
Step 6: Use the Electradrop in combination with the Locinox OGS groundstop



7. Electrical Wiring

⚠ Choice of the relay: The type of relay that needs to be selected depends on the type of flashing light of the system. For example: When you use a 230V flashing light, you should use a relay with a voltage of 230V.

1	Brown	Plus-pole of the power supply 24 V DC (+)
2	Grey	Warning light (flasher) coming from the relay
3	Black	Optional: Reading out the position of the dropbolt.
4	Black	
5	Blue	Nul-pole of the power supply 0 V DC (-)
Control signal		Connecting parallel over the flashing light of the gate.



8. FAQ

- What happens if the ground stop is contaminated with eg. sand ?
Due to the internal obstacle detection, the extending bolt of the Electradrop will stop sliding down whenever he encounters an obstacle.
- What happens if the power cable of the Electradrop is cut through ?
The Electradrop will remain in its current position
- In case of power failure, how can I remove the Electradrop ?
The Electradrop can be unlocked by the cylinder so you can slide up the Electradrop afterwards.